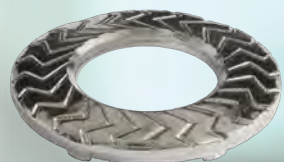
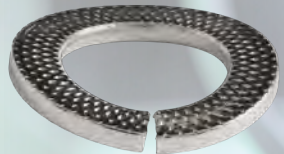


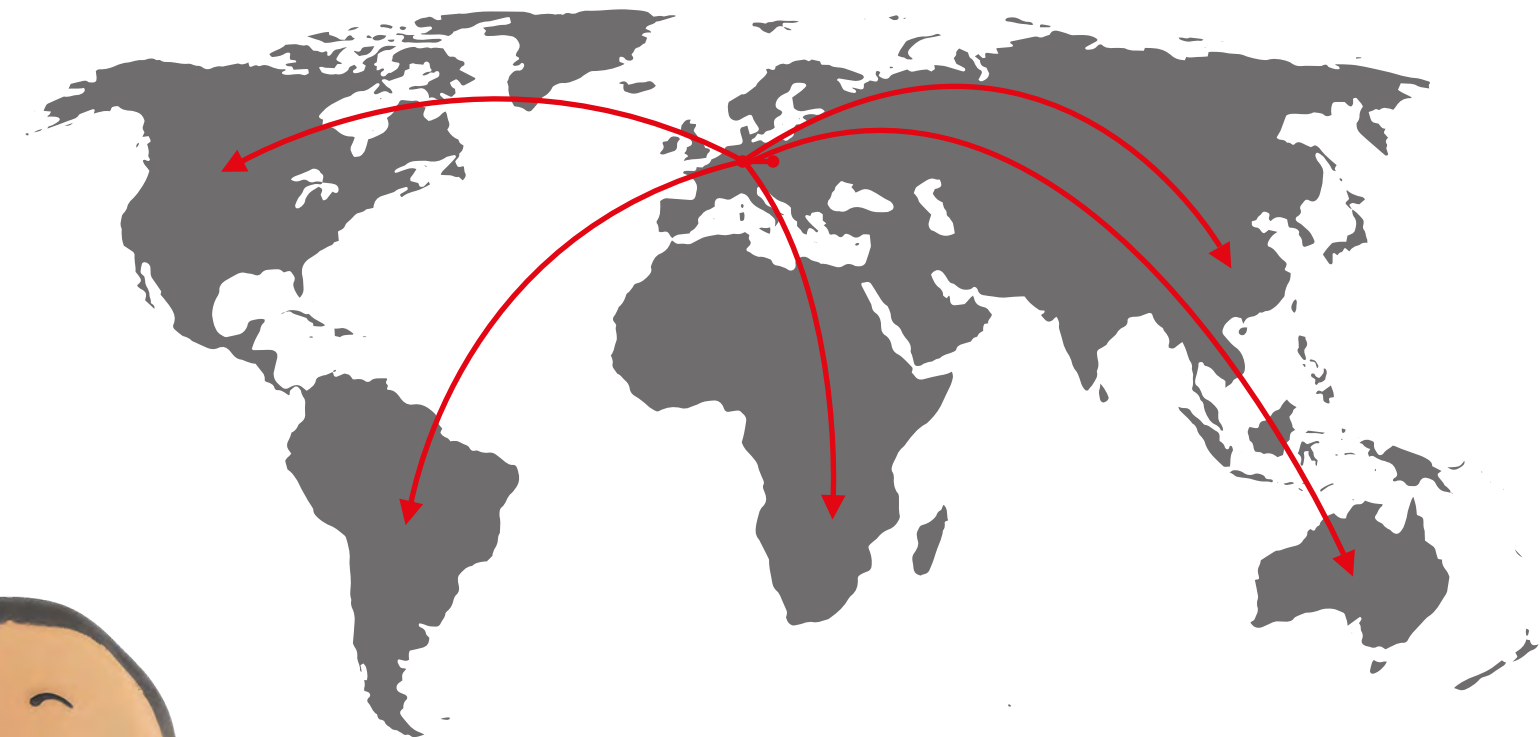
GÜDE

Spezialfabrik für Schrauben-
und Wellensicherungen



ENGLISH

From Europe to the world



Split lock washers from Germany and Poland!

Split lock washers are produced in Asia!“ We often heard this argument. And just as often refuted. For more than 75 years, we have been producing as a family business in Germany, since 2021 also in Poland, being competitive on the global market.

Three GÜDE decisions

We produce in Europe and deliver worldwide. Thanks to long-running series and streamlined logistics processes, we are more cost-effective while maintaining consistently high product quality.

We build our machines and tools ourselves, so we remain fast and flexible.

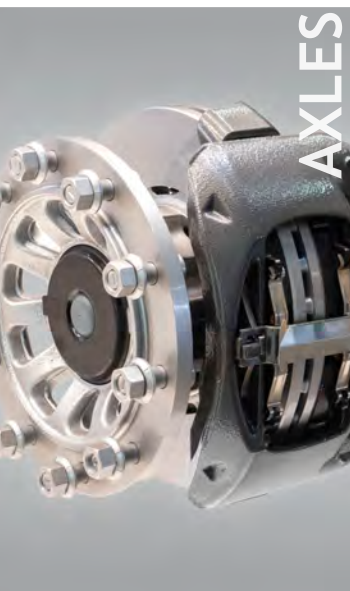
We continue to invest. We have just completed our new mini load system, a fully automated small parts warehouse (AKL). 12,500 storage locations are now available and will improve our delivery performance.



GÜDE mini load system

[illegible][illegible]

Split lock washer



AXLES



DISTRIBUTION



COMMERCIAL VEHICLE
CONSTRUCTION



SCREWS



**Sperrkant
spring washer**
A / Z



**Sperrkant
spring washer**
captive



DIN 6905
captive



DIN 43699



DIN 6913



DIN 127
A / B
open / flat



DIN 127
double



DIN 128
A / B
convex / corrugated



DIN 7980
high tension



JIS B 1251



ASME B18.21.1
Alloy / Heavy / Heavy Extra Duty /
Light / Regular



BS 1802 / BS 4464
A / B / D



NF E 25-515/-516/-517
NF F 50-001



DIN 7993 / DIN 9925 / DIN 9926
A / B
for shafts / for drillholes



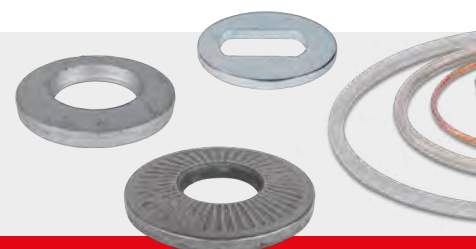
DIN 74361
limes type conical
lock washer C



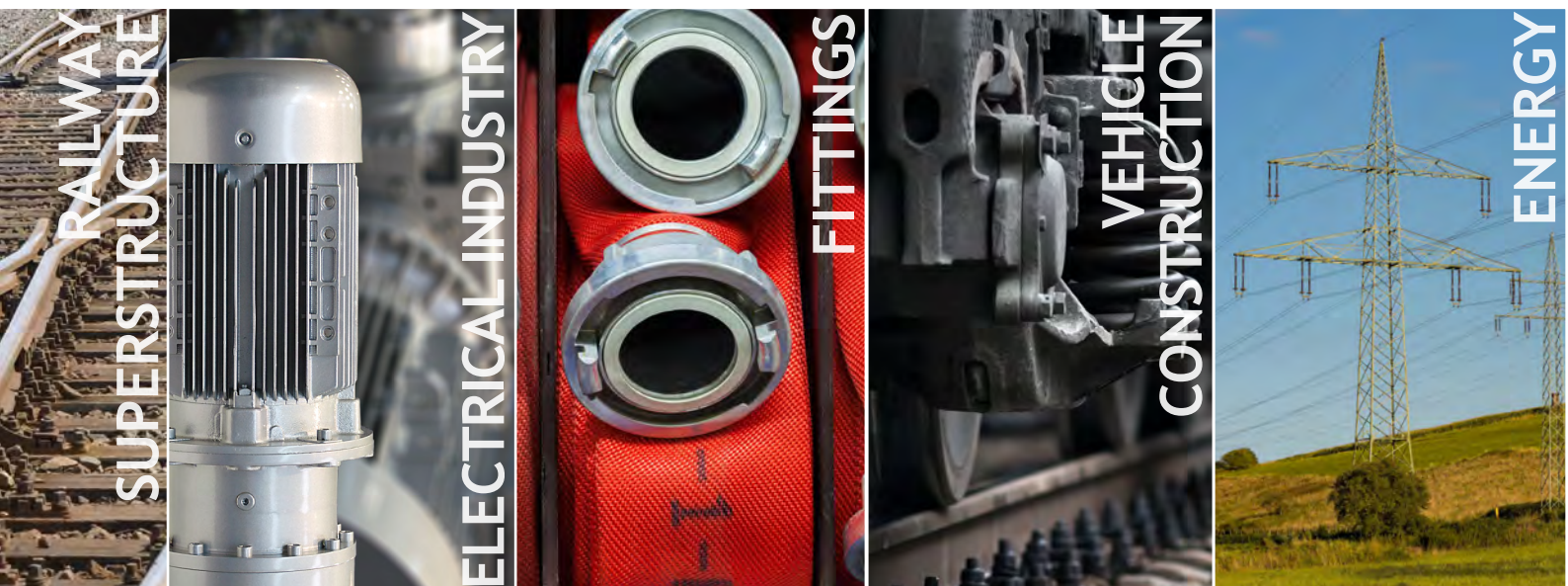
Centring ring



Railway superstructure
single / double / triple



Washers



Sperrkant washer

S / M / B / K / Z

slim / medium / wide / toothed / for cylinder head screws



DIN 6796

conical washer M3 - M36



DIN 7967

row 1 / row 2 (FG) / row 3 (FG)



Contact washer NF E 25-511

S / M / B / K

slim / medium / wide / toothed



DIN 6797

A / I / V

outside / inside / countersunk



Doubled toothed lock washer



DIN 6798

A / I / V

outside / inside / countersunk



DIN 137

A / B

curved / crinkled



DIN 6319 C



DIN 6319 D



Customized parts



Tough - but the right way

An under-hardened spring washer lacks spring force, an over-hardened one breaks under load. It all depends on the right hardness. That is why we have always had the hardening process in-house. In the 1950s, we used two self-built ovens, but today we operate a fully automated hardening plant that runs around the

clock. The fact that we document the hardening process of individual product batches precisely is no mean feat. Others do that too. However, we are able to set customised hardness levels flexibly and, above all, quickly. This time advantage in hardening is what our customers appreciate about us.



Spring steel



Stainless steel



Bronze



Aluminium



Oiled



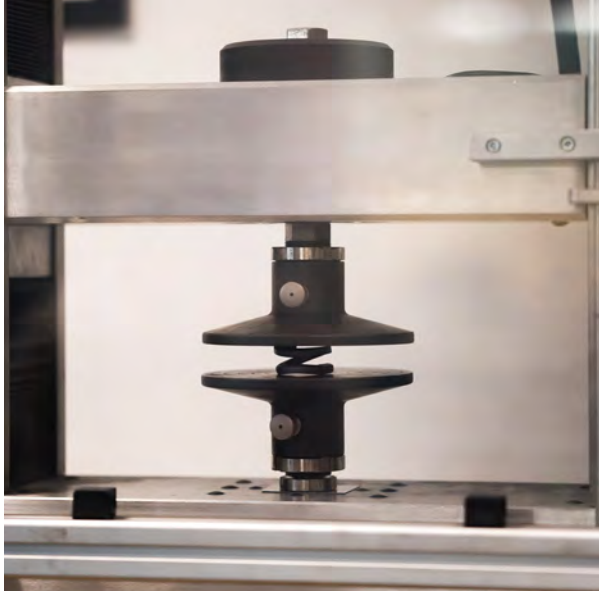
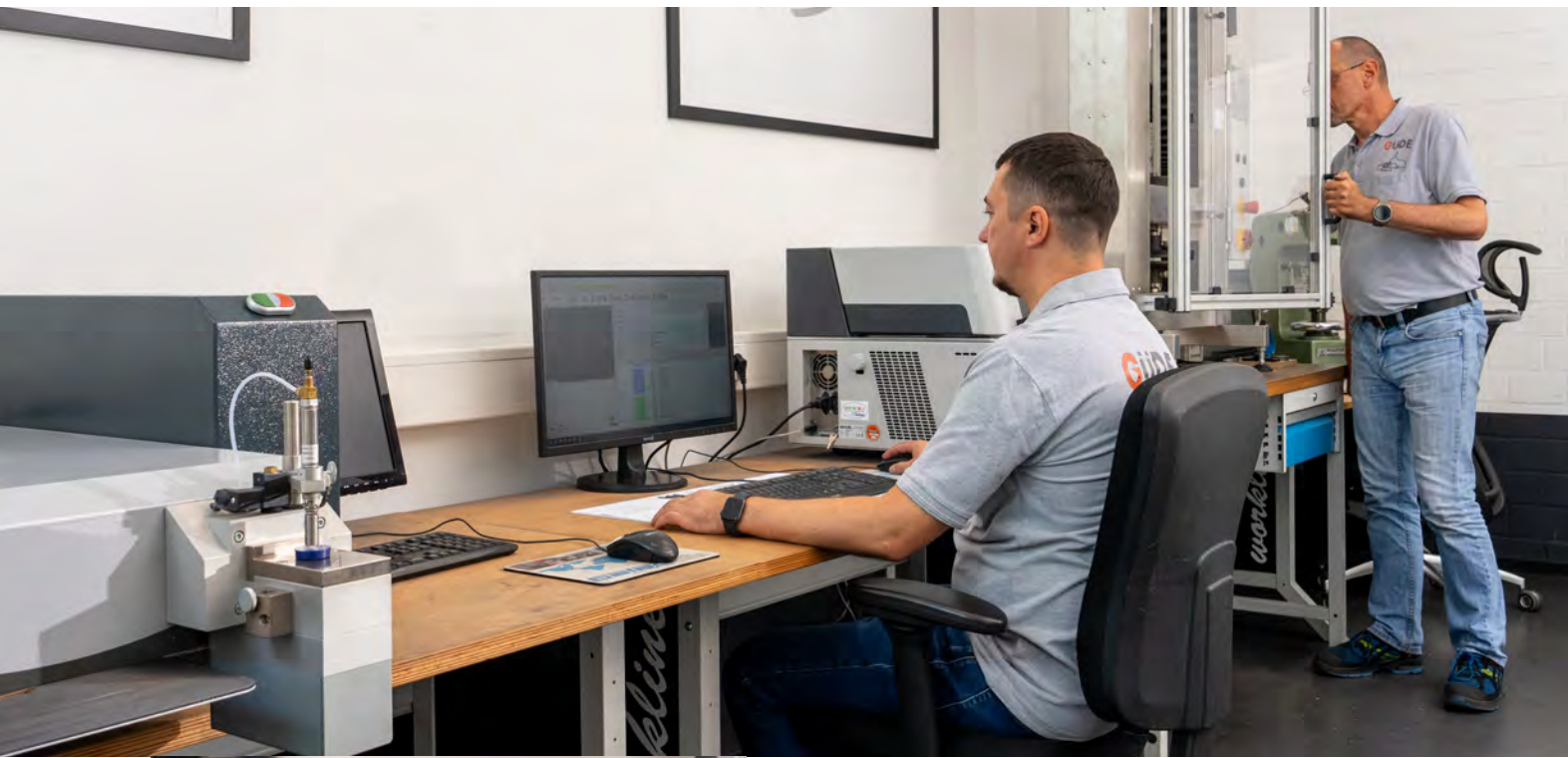
*Mechanical zinc
plated white*



*Mechanical zinc plated
yellow Cr6-free*



Nickel



The proof makes it

Quality certificates and documentation are essential. This is why we have continuously expanded our QA department: In terms of personnel and our testing facilities.

Spectral analyses, hardness, tensile and pressure tests as well as optical dimensional tests are the basis for ensuring that we can meet our own Güde quality standards and the high customer requirements.

Protected shell: Hard core

The following applies to almost all of our products: The surface must be protected from external influences. For special parts in particular, the surface treatment process is always a challenge that we can master and document: With our own salt spray test chamber and an X-Ray measuring instrument. This is how we guarantee the highest Güde quality.



plated



Electro
galvanized



Hot-dip
galvanized



Zinc-flake



Well thought out is half done

Unnecessary process costs are expensive and can be avoided. To do this, however, the individual company processes must be scrutinised and readjusted again and again. We do this constantly in the interests of our customers through internal and external audits. This ensures complete documentation of all processes and materials.

That is why we are certified according to:

- BME-Cat
- DIN ISO 9001
- DIN ISO 14001
- DIN ISO 50001



GÜDE
Spezialfabrik für Schrauben-
und Wellensicherungen

Güde GmbH
Dieselstraße 8
D-58840 Plettenberg
Fon: +49 2391 9190-0
info@guede.net



www.guede.net